



Ice Skates And Other Cruelties

CONCEPT AND PERFORMANCE

Camille Paycha

COLLECTIVE MISE EN SCENE

Camille Paycha, Markéta de Borggraef, Stéphane Gilles-Pick, Laura Gilles-Pick

COSTUME & PROPS Stéphane Gilles-Pick

SCENOGRAPHY Kris Van Oudenhove

LIGHT Kris Van Oudenhove, Bert Van Dijck

SOUND Bram Vandeghinste, Markéta de Borggraef, Bert Van Dijck

ARTISTIC ADVICE Bauke Lievens

TECHNICIAN Bert Van Dijck

DIFFUSION Emma Ketels (Je buro)

PRODUCTION Camille Paycha/Boegbeeld VZW

COPRODUCTION PERPLX, De Grote Post, Festival Circolo

RESIDENCIES

Circuscentrum, De Grote Post, PERPLX, Cirqueon, De Spil, Miramiro, Theater op de Markt

Laureate CircusNext 2020-2021, co-funded by the EU programme Creative Europe



THIS TECHNICAL RIDER IS AN INTEGRAL PART OF THE CONTRACT. ADJUSTMENTS CAN BE MADE IF REQUIRED DUE TO SPECIFIC FEATURES OF THE VENUE BUT ONLY IN NEGOTIATION WITH THE COMPANY.

General:

Timing	+ - 50 minutes
intermission	NONE
No one will be allowed to enter the house once the performance has started !	
Performers	1
Extras (from the venue?)	2
Technician/production from the company	2
Technicians of the house	2
Technicians of the house during performance	1
Setup and fine tuning	7 hours (finished 1 hour before showtime)
Strike and get out	2,5 hours

The work schedule will be discussed for each venue, depending on local working-conditions and the available time. In order to judge the situation, it is very important that we obtain plans (PDF) and a technical rider from the hosting venue.

Stage/Set:

- The set is an ice skating rink made with plexiglass panels and a plastic floor. (no ice) Inside the skating rink we use glass shards.
- The use and placement of borders and black curtains will be discussed for each venue.
please provide pictures of the empty stage along with the technical rider

The company provides:

- Plexi panels and skating floor. (plastic 60x60cm tiles)
- All props.
- A drop system for a few glass shards. (to be rigged in the middle above the skating rink)

Theatre provides:

- A completely empty and clean stage that can be darkened. A total black out is important.
- A flat and level floor. No rake. No bumps.
- A black dance vinyl covering the stage. (well taped. this will help with the cleaning)
The ice skates will not damage dance vinyl.
- Stage size: 10m x 10m
- Grid/flybar height: 7m
- Necessary beam structure to hang light and set.
- 1 or 2 good vacuum cleaners that can handle glass dust.
- Parking space for 1 large and 1 small van.



Light:

The company provides:

- Computer with interface to control the lighting
- 4x fluorescent tube fixtures with schuko connector.

For any other, local plug, the theatre must provide the necessary amount of converters from the local standard to SCHUKO.

Theatre provides:

See the light plot!

- All standard fixtures indicated on the light plot.
- All the colour gels as on seen on the light plot.
- The necessary safety cables to secure a clean and safe hook up .
- All the necessary dimmers.
- A DMX-512 connection and 230V fixed power (schuko) in the grid for our drop system
- A table for the lighting interface and laptop right next to the sound desk

Fixtures:

- 4 x PC 2kW (profiles are possible too)
- 1 x Profile Spot 1kW
- 24 x PAR64 CP62
- 4 x ACP Assymetrical Flood light

Gels:

- 5 x L192 for PAR
- 5 x L200 for PAR
- 8 x L201 for PAR
- 2 x L283 for PAR
- 4 x L174 for PAR
- 2 x L192 for 2kW PC
- 2 x L139 for 2kW PC
- 1 x L202 for 1kW Profile

Sound:

The sound system will be in perfect working condition, speakers & multi-cores tested before the set-up.

We will use a quadrophonic setup.

The company provides:

- Computer with audio interface.
- 2 Condenser microphones with 15m cables and foam microphone holders.



Theatre provides:

- High quality mixing desk. (preferably digital)
- All necessary XLR and speaker cables.
- Minijack connection.
- Patch cables connecting the audio interface and mixing desk. (interface outputs are cinch)
- 4 high quality full range speakers and 2 subs with matching amplifiers and processors

Reference brands: D&B audio, L-Acoustics, Meyer Sound

1= FOH L

2= FOH R

3= behind audience L

4= behind audience R

- 2 stage monitors.
- 4 identical tall microphone stands.

Please keep all audio power connections on a separate power circuit from the lights.

Costumes/Dressing rooms:

- We will need a washing machine (only if there is more than 1 show), iron and ironing board.
- Properly heated, clean and secure dressing room with shower and towel.
- Coffee, tea, water and maybe some snacks.

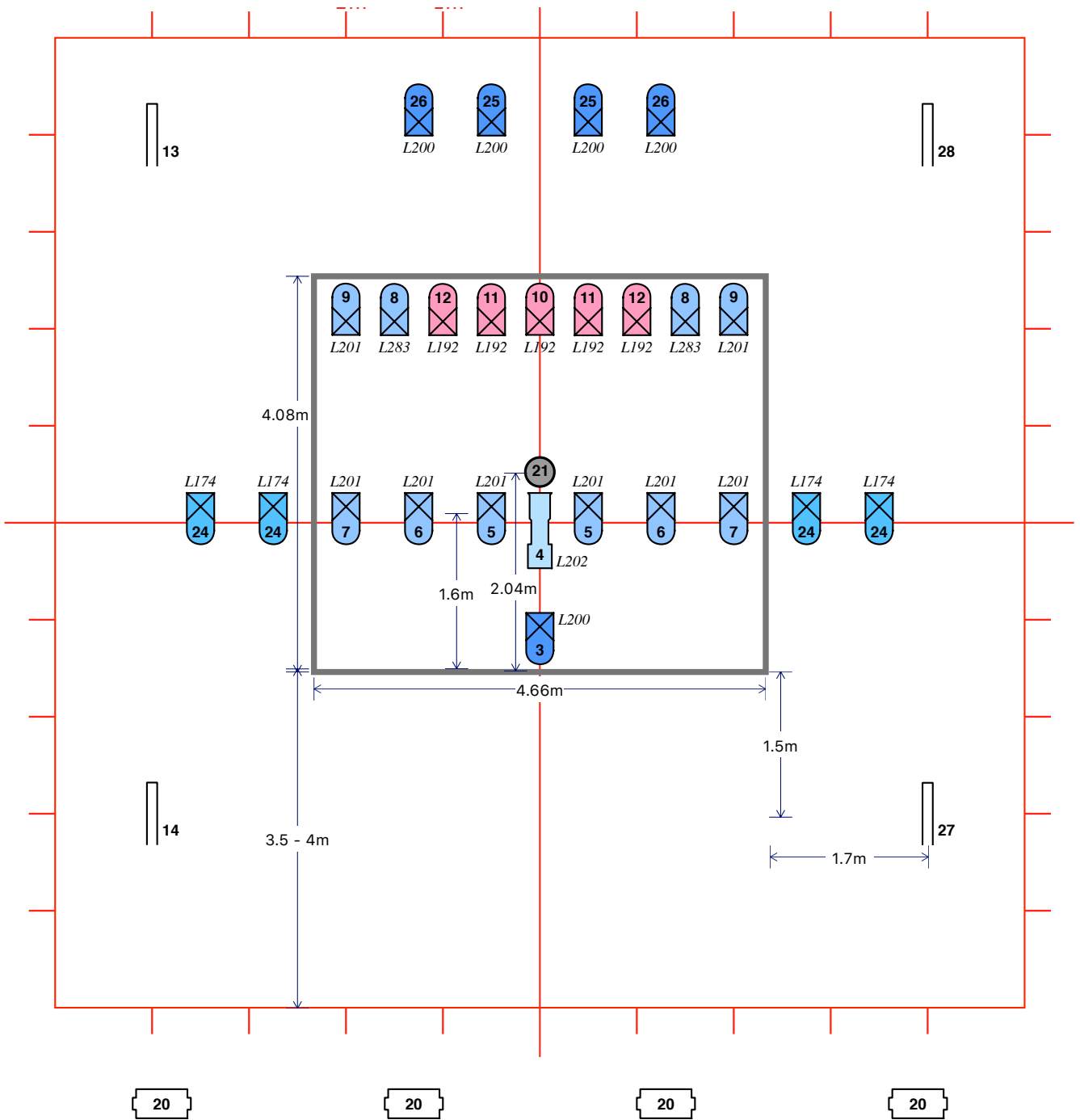
For further information or questions:

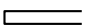




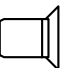
Technician: Bert Van Dijck
+32 499 256 947 bert@crealuna.be

Diffusion: Emma Ketels
+32 495 893 163 emma@jeburo.be

Boegbeeld VZW:
Camille Paycha
+32 491 632 336 cpaycha@hotmail.com





-  fluorescents we bring
-  1kW ACP flood or similar
-  1kW profile spot
-  PAR CP62
-  glass dropping system
(needs 230V, DMX and dimmer)
-  2kW PC with barndoors

Ice Skates And Other Cruelties version 1.2
Camille Paycha

- flybars at 7m
- we need bright house lights that do NOT light the stage



